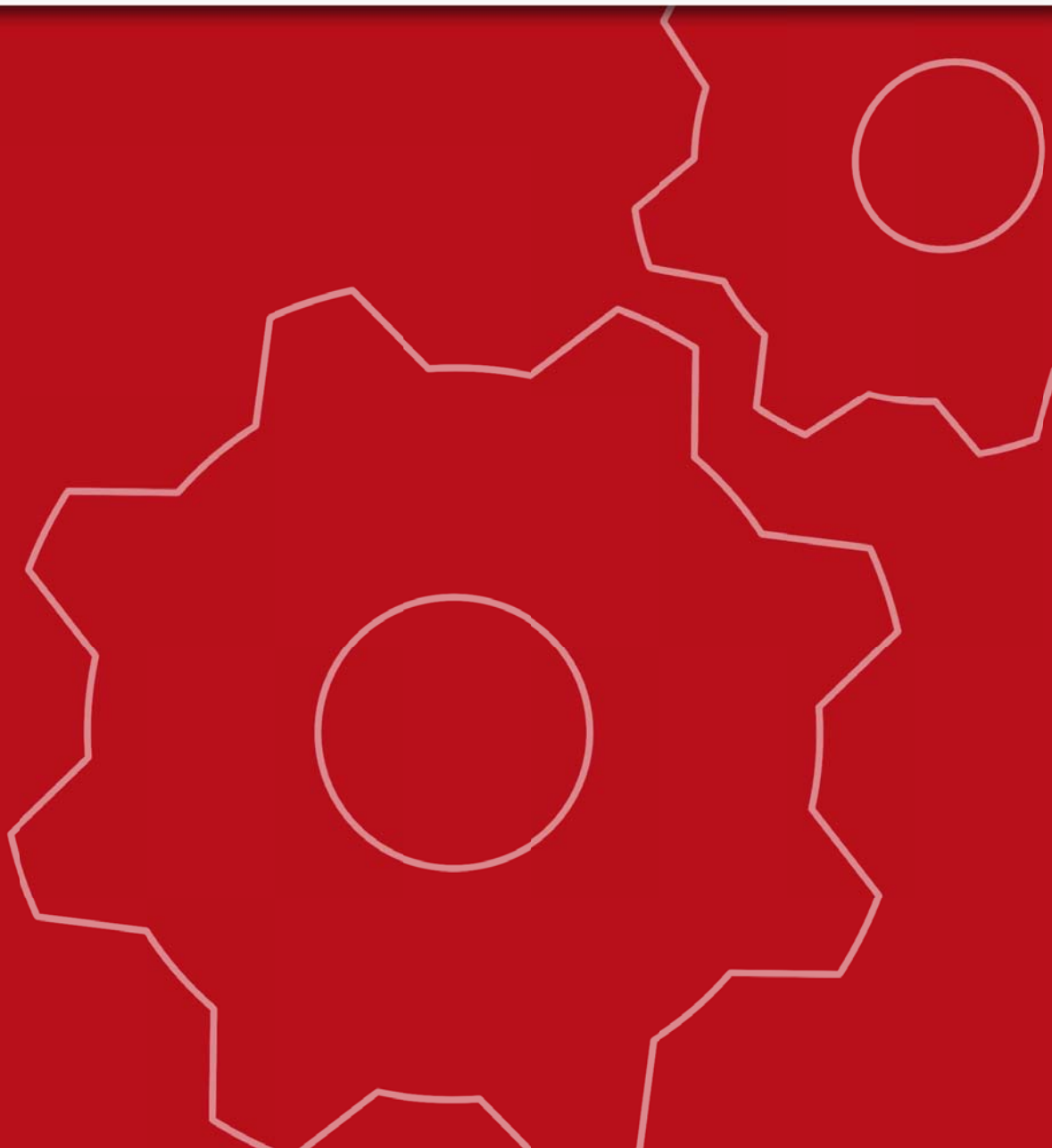




NETASQ
UNIFIED MANAGER



NETASQ UNIFIED MANAGER

V. 7.0.2

USER CONFIGURATION MANUAL

(Slot Scheduler)

Reference : ENCH0803_SLOT-SCHEDULER-V7.0.2
Created : March 2008
Modified : March 2008

Slot Scheduler

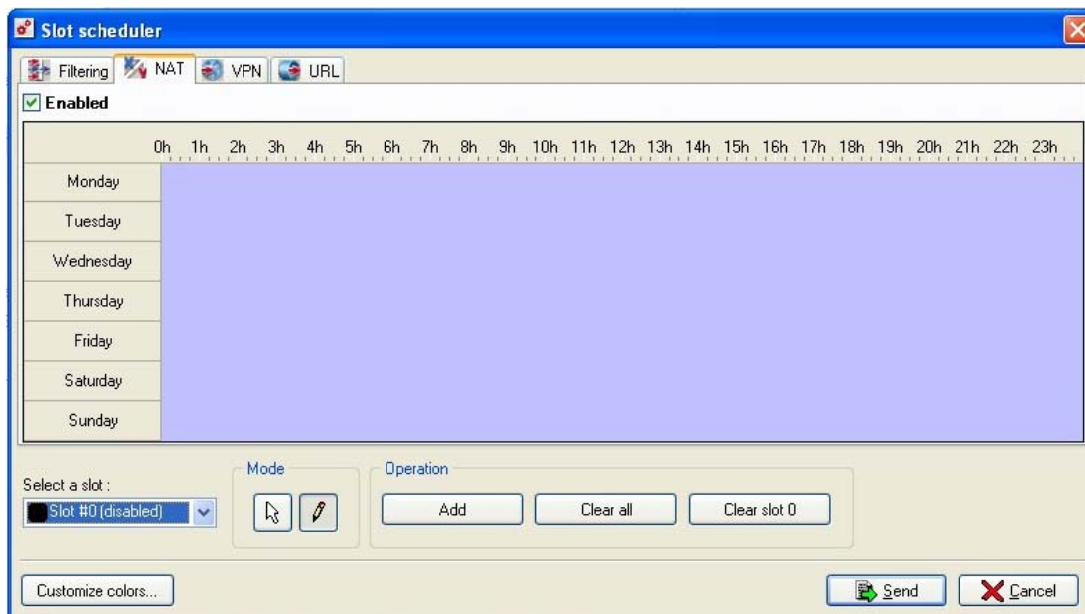
Filter and encryption slots are subject to hourly scheduling. Administrators who have F+M or V+M rights use a grid which resembles an interactive table for each slot type. The horizontal scale represents the hours of the day, while the vertical scale symbolizes the days of the week. Slots can be assigned to time slots by selecting a previously-defined slot and by highlighting the corresponding time slots with the mouse.

There must always be an active filter slot at any given time. When an administrator starts with a new grid to define or modify the filter scheduling, the first slot that the administrator selects will automatically be assigned to every hour of every day in the week.

You can configure a slot so that it activates only during “office hours”, programming it to block all traffic the rest of the time.

To program the activation of a slot you have two possibilities:

- By the **slot scheduler** menu in the NETASQ UNIFIED MANAGER menu directory.
- By the **Program** button present in all slot grids.



The slot scheduling window comprises three parts:

- Slot type selection tabs
- A timetable.
- Action buttons

Slot type selection tabs

Four slot types are available:

- **Filter:** Programs filter slots.
- **NAT:** Programs address translation slots.
- **VPN:** Programs VPN tunnel slots.
- **URL:** Programs URL filter slots.

Every one of these tabs will display an interface that allows adding, deleting or modifying a weekly slot scheduler per band and by using the mouse. The user can then define a time slot for a given policy.

Activating/Deactivating the slot scheduler



The slot scheduler can now be enabled or disabled using the checkbox **Enable** (located under the tabs). This is particularly useful if you intend to test your filter policies.

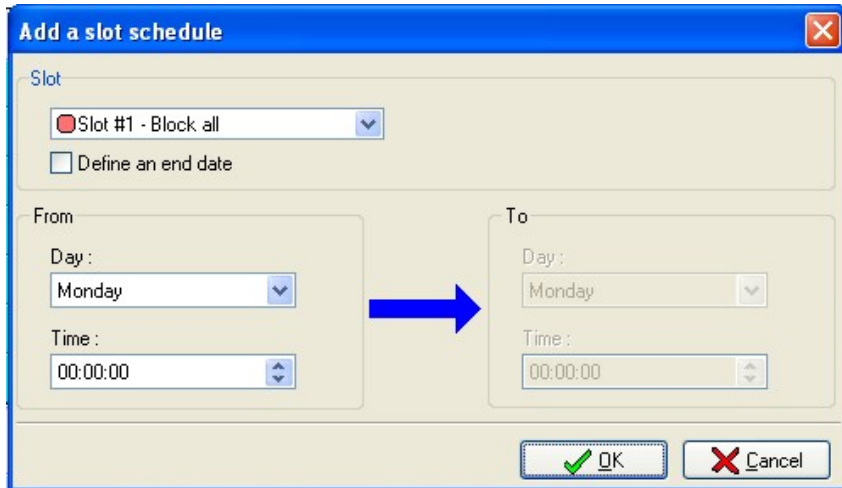
The timetable

This zone is structured like an “interactive” table. The horizontal scale represents the hours, and the vertical scale represents the days of the week. With the action buttons, you will be able to program the activation of these slots by selecting a time range with the mouse.

You will note that at all times, at least one filter slot has to be programmed. Therefore when you program the first filter slot, it is programmed for every hour, everyday.

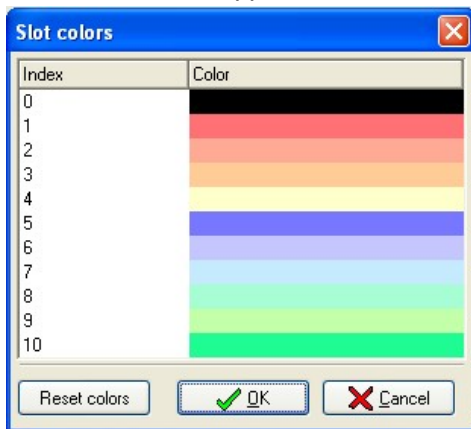
Action buttons

Current slot	Selects a slot to be programmed.
	Selects a zone on the grid
	Modifies a zone on the grid
Add	Adds a schedule to a slot. The following window will appear:



After a slot has been selected, check the option **Define an end date** to determine an activation period (Date and time).

Clear All	Deletes all the zones on the grid.
Clear a slot	Deletes all the zones concerning a slot.
Colors	Configures the colors associated to each slot. When you click on the button, the window below appears:

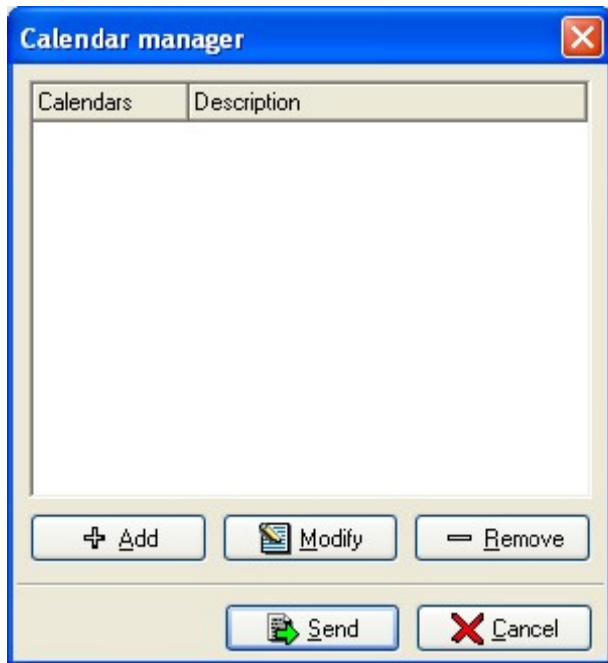


Send	Clicking on this button will send the slot schedule to the configuration server and activate it.
-------------	--

Calendars

Calendars are used in various modules, especially user authentication.

Each user is associated to a calendar which allows him to authenticate with the Firewall when the filter policy established by the administrator requires it. This calendar may be specific to the user or several users. It defines the zones where the user has to authenticate and the zones to which the user has no access. Once the calendars have been defined, they may be selected when user authentication is configured. Access to the configuration of this calendar is via the **Calendars** menu in the NETASQ UNIFIED MANAGER menu directory. The following window appears:

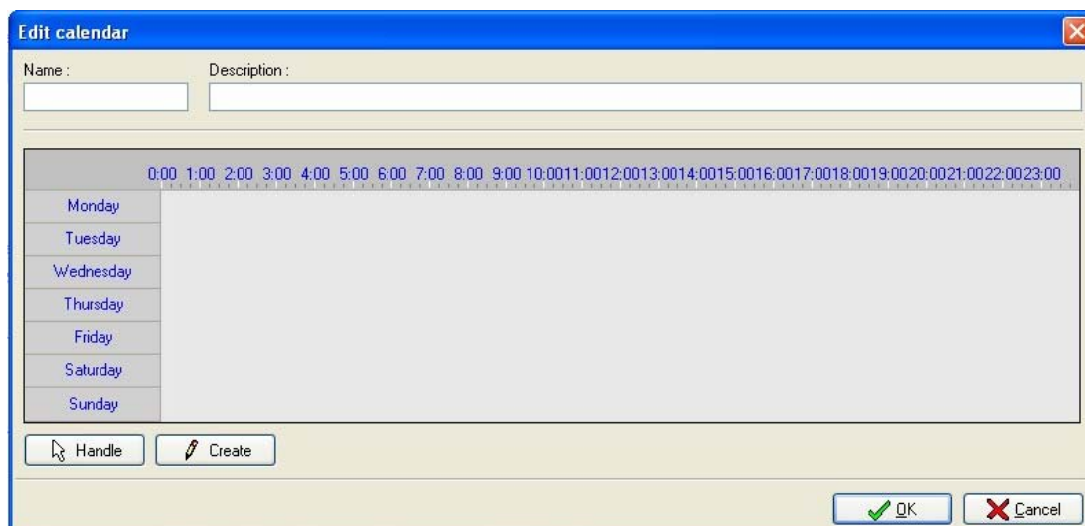


The calendar selection window comprises three sections:

- A grid containing configured calendars,
- Action buttons allowing calendars to be added, modified or deleted,
- At the bottom of the window, buttons to confirm or cancel modifications made.

When you wish to add or modify a calendar, you have several ways of doing so:

- ➦ By selecting **Objects** in the NETASQ UNIFIED MANAGER menu directory, then double-clicking on a user. The window "Edit a user" will then appear. In the **Authentication** tab, select **Calendar** then **Create a calendar**.
- ➦ By selecting the **Authentication\Captive portal** menu in the NETASQ UNIFIED MANAGER menu director. In the menus **Internal interfaces** and **External interfaces**, select **Advanced**. Click on **Calendar** then select **Create a calendar**.
- ➦ By clicking on **Add** or **Modify** in the **Calendars** menu.



The calendar configuration window comprises three sections:

- The "Name" field: Name given to the calendar and "Description". The description of a calendar can be edited in the table, unlike the name.
- A timetable spanning a week.
- Action buttons that allow you to create time slots and to use them subsequently.



Remark

Only a limited number of calendars can be created.

The timetable

This zone is structured like an “interactive” table. The horizontal scale represents the hours, and the vertical scale represents the days of the week. With the action buttons, you will be able to program the time slots during which authentication is allowed by selecting a time range with the mouse. By clicking on these column and row “titles”, you will invert the current selection in the column or row in question. By clicking in the left upper corner of the table, you will invert the whole selection.